

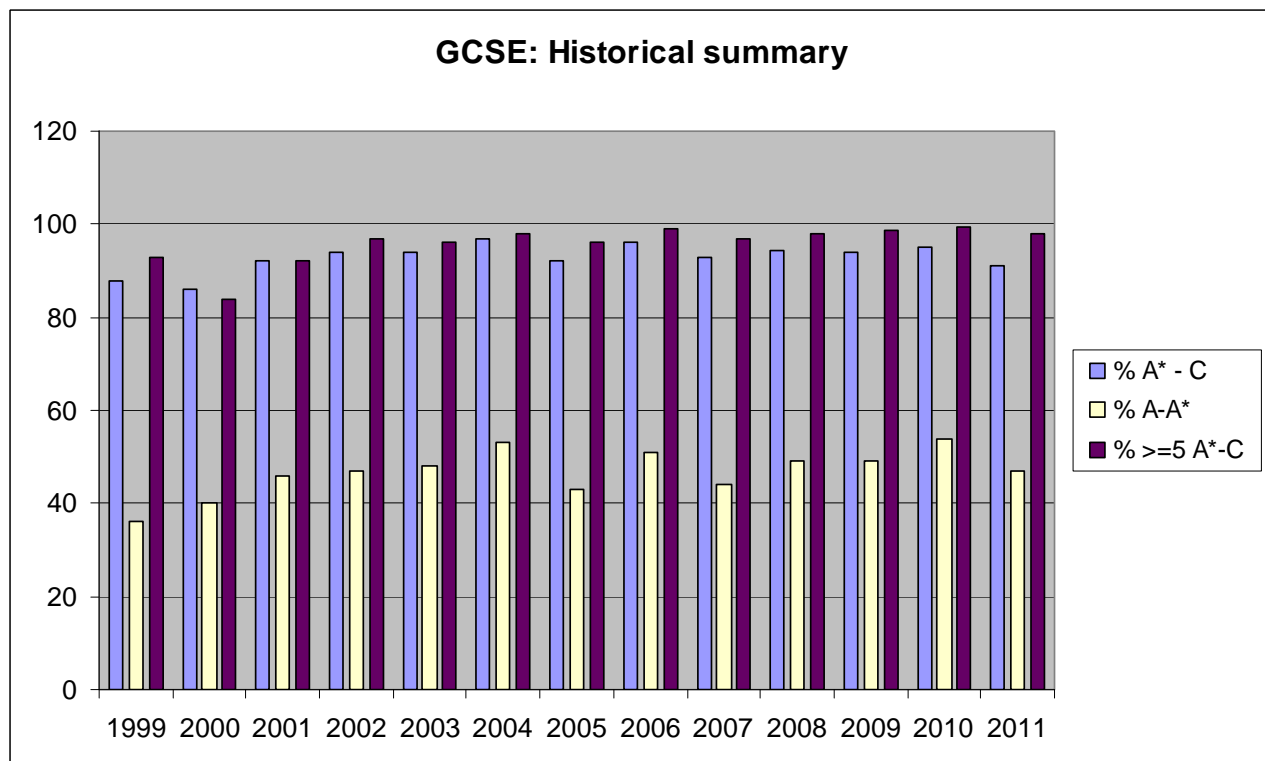
HISTORICAL RESULTS (2011)

General Certificate of Secondary Education (GCSE) Results

A summary of the GCSE performance of St Christopher's students since 2000 is shown below.

	2000	2001	2002	2003	2004	2005	2006	2007	2008	2009	2010	2011
No of candidates	97	115	113	126	105	107	120	130	119	132	152	134
% A* - C	86	92	94	94	97	92	96	93	94.5	94	95	91
% A - A*	40	46	47	48	53	43	51	44	49	49	54	47
% 5 or more A* - C passes	84	92	97	96	98	96	99	97	98	98.5	99.3	98

The following chart shows these results:



In 2011, the percentage of students achieving the benchmark 5 A* - C grades was 98%. 59 of our Year 11 students achieved 5 or more A* - A grades in their examinations.

Grade comparisons: St Chris v UK GCSE

GCSE Statistic	St Christopher's	England
% of grades at Grade A* ('A star')	18%	8%
% of Grades A* + Grade A	47%	23%
% of Grades A* - C	91%	70%
% of students with 5 or more Grades A* - C	98%	75%
% of students with 5 or more Grades A* - C including English and Maths	96%	49%
English Baccalaureate (EBacc) *	73%	16%

* The English Baccalaureate was introduced in England as a performance measure in the 2010 performance tables. The measure recognizes where pupils have secured a grade C or better across a core of academic subjects which includes: English; mathematics; history or geography; two sciences; and a language.

St Christopher's EBacc results compared with State, Independent and Selective Schools

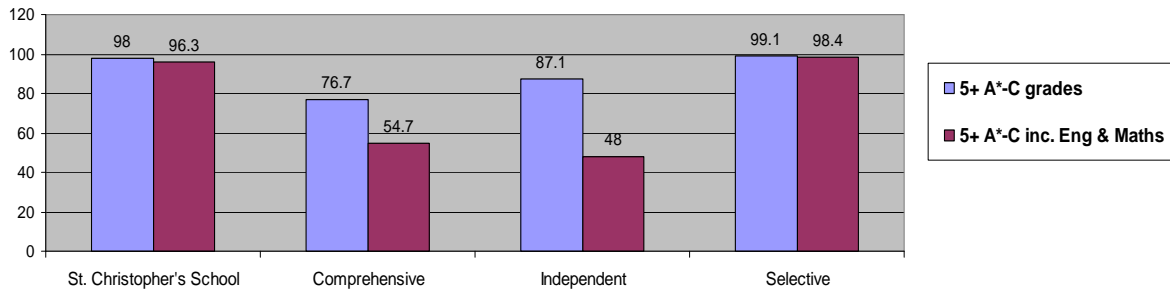
The percentage of St Christopher's students who achieved the EBacc in 2010 was 82% and in 2011 is 73%. This compares with 16% of students in all UK schools and a figure of 45% for Independent Schools and 67% for all Selective Schools.

Comparisons with UK GCSE results (UK 2010 statistics only – 2011 not available)

The following data is taken from the UK Department for Education website and is a summary of statistics from 2010 for Comprehensive, Independent and Selective Schools – the statistics for St Christopher's are for 2011.

Two key statistics are shown – the percentage of students achieving 5 or more A* - C grades and the percentage of students achieving 5 or more A* - C grades including English and Maths.

GCSE 2011: St Christopher's (2011 data) vs Comprehensive, Independent and Selective Schools (2010 data)



Independent Schools Council (ISC) data

In comparison with the Department for Education statistics, the following statistics are taken from the Independent Schools Council website and are the results published for 2010. The statistics published shown below are for Independent Schools compared with St Christopher's. Two key statistics are shown: the percentage of students achieving 5 or more A* - C grades including English and Maths; and the percentage of students achieving 5 or more A* - C grades including English, Maths a Science and a Modern Foreign Language.

<u>2011</u>	5+ A* - C grades including Maths and English	5+ A* - C grades including Maths, English, a Science and a Modern Foreign Language
St Christopher's School	96.3	80.6
Independent Schools (ISC)	93.1	80.7

These results indicate that St Christopher's are ahead of the published statistics for Independent Schools for 5+ A* - C including English and Maths and at the same level when Science and a Modern Foreign Language are also included. The figures for 2010 are below:

<u>2010</u>	5+ A* - C grades including Maths and English	5+ A* - C grades including Maths, English, a Science and a Modern Foreign Language
St Christopher's School	94.7	91
Independent Schools (ISC)	93.1	80.7

The difference in the statistics published for the Independent Schools by the Department for Education and the ISC may be explained by the fact that the total number of students included in the ISC data is 41,039 and for the Department for Education the number is 47,570 indicating that not all Independent Schools submit their results to the ISC.